


HIITIO[®]

Two large, teal-colored geometric shapes are positioned on the right side of the image. The first shape is a large, irregular polygon that points towards the right. The second shape is a smaller, more complex polygon that also points towards the right, partially overlapping the first one.

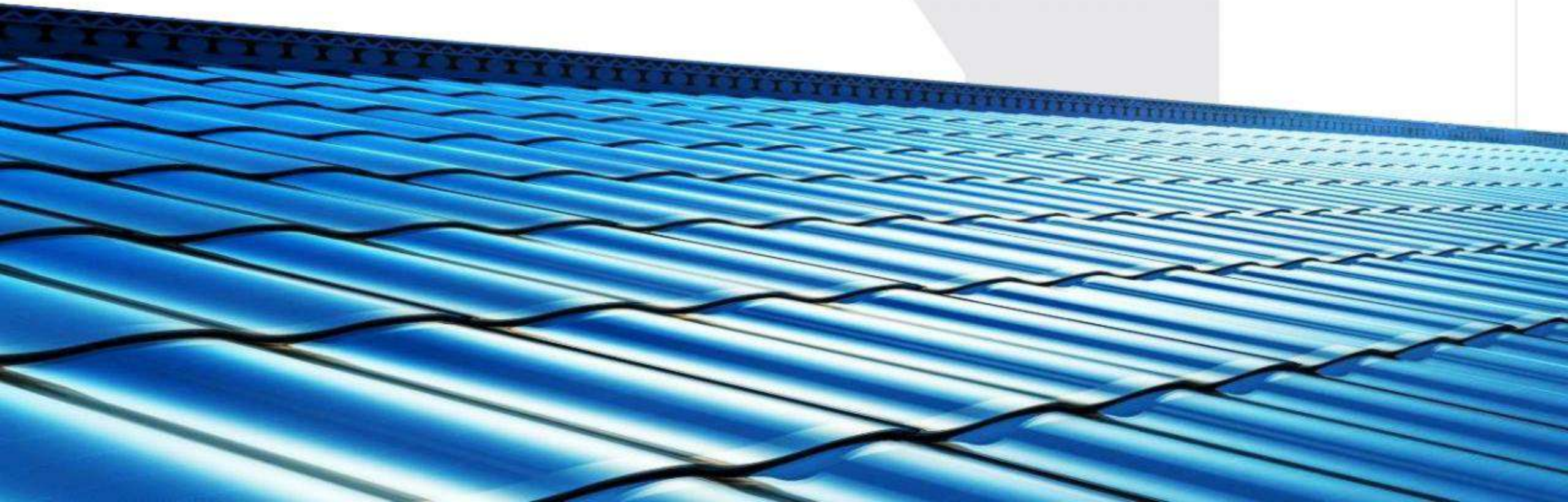
Curved photovoltaic tiles

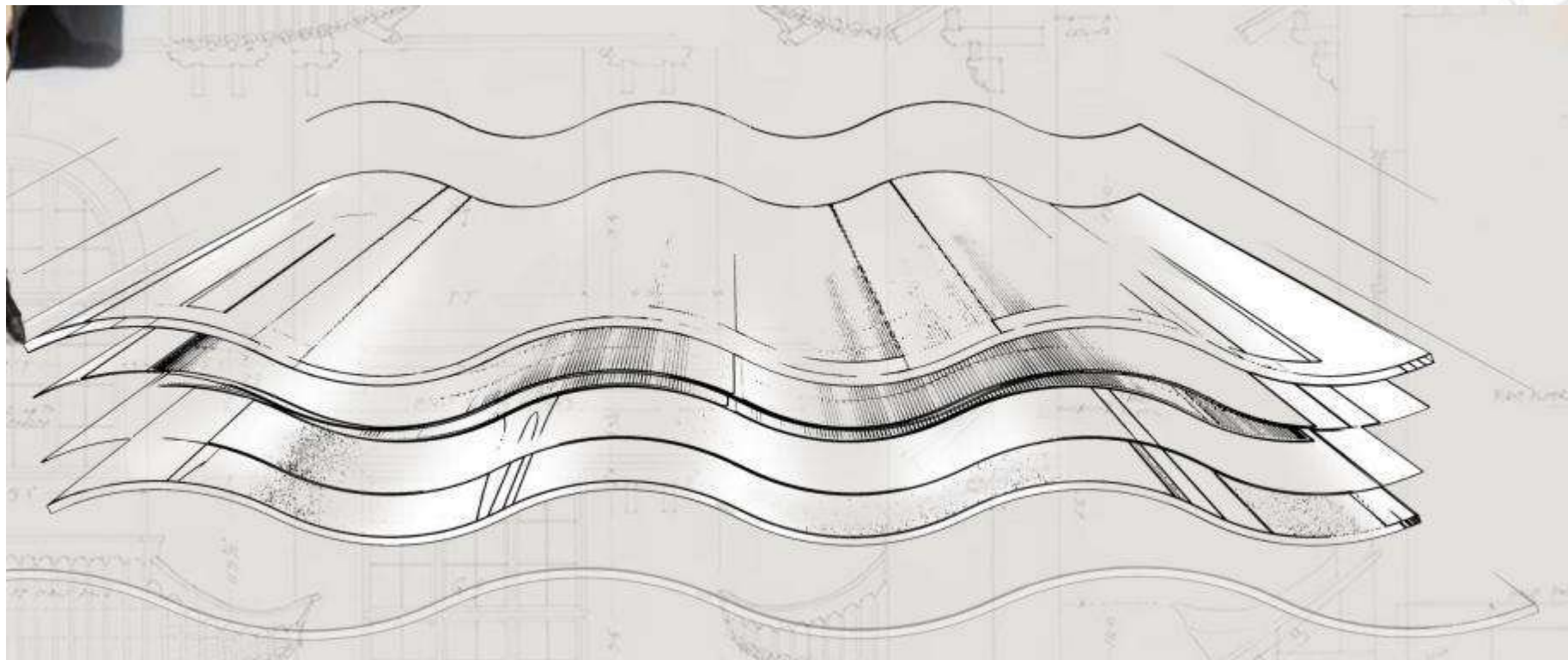
ZHEJIANG HIITIO NEW ENERGY CO.,LTD.

HIITIO[®]
和诚电气

Thin film battery CIGS($\text{CuIn}_x\text{Ga}(1-x)\text{Se}_2$)

Flexible roof three arch PV tile





- . Integration with modern technology and classic architecture.
- . Passed the test by architectural experts for its unique design and style
- . Providing more alternative architectural solutions.

cutting-edgetechnology

Integration with solar film cells and traditional roof tiles

Transmittance: >91.5%



Exquisite craft



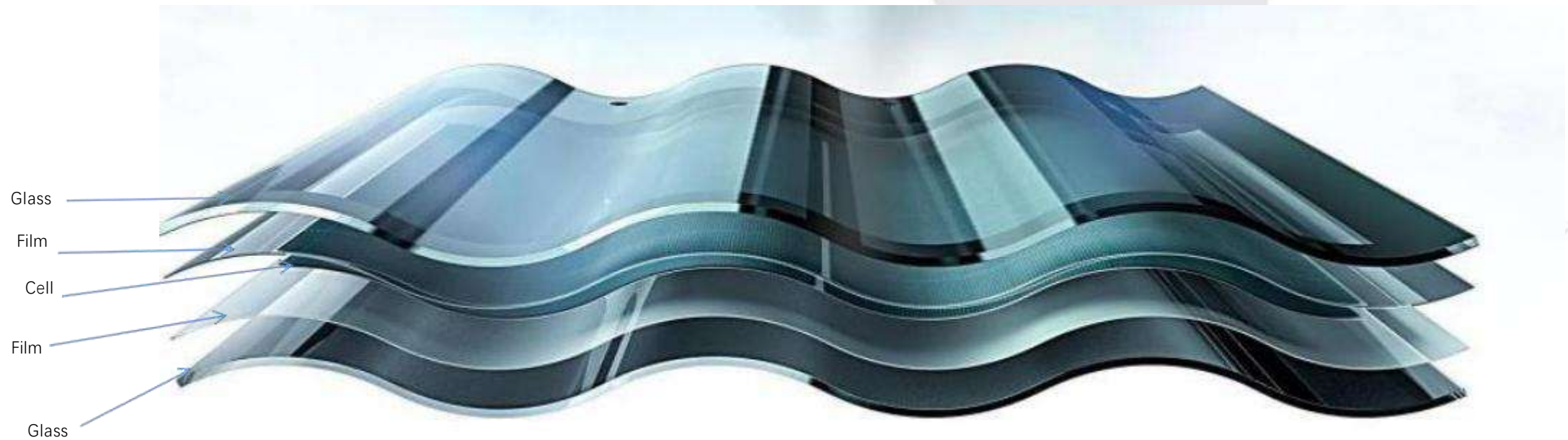
Cutting-edge technology



Smart power



Hardness & softness





Product color

Adapt to various green shapes and styles of design



Black, Red, Green color



Color	<i>Black</i>	<i>Red</i>	<i>Green</i>
Maximum power output / pcs	32W	28W	25W
Maximum power output / sqm	100-105W	87-92W	77-82W
Open circuit voltage	10.8V	10.5V	10.3V
Short circuit current	4.1A	3.9A	3.8A
Maximum power point voltage	8.9V	8.4V	8.1V
Maximum power point current	3.6A	3.4A	3.1A
Product dimensions	720*500*33mm		
Component thickness	7.5mm(±1)		
Component weight	6.5kgs		
Weight of the component/sqm	22kgs		
Warranty	25 years		
Cell type	CIGS		
Front panel material	Tempered glass		
Back panel material	Tempered glass		
Frame	Aluminum alloy/ PPO		
Junction box	IP67, MC 4		
Color	Black, red, green		



About
Installation

Installation Instruction- Easy installation, good durability

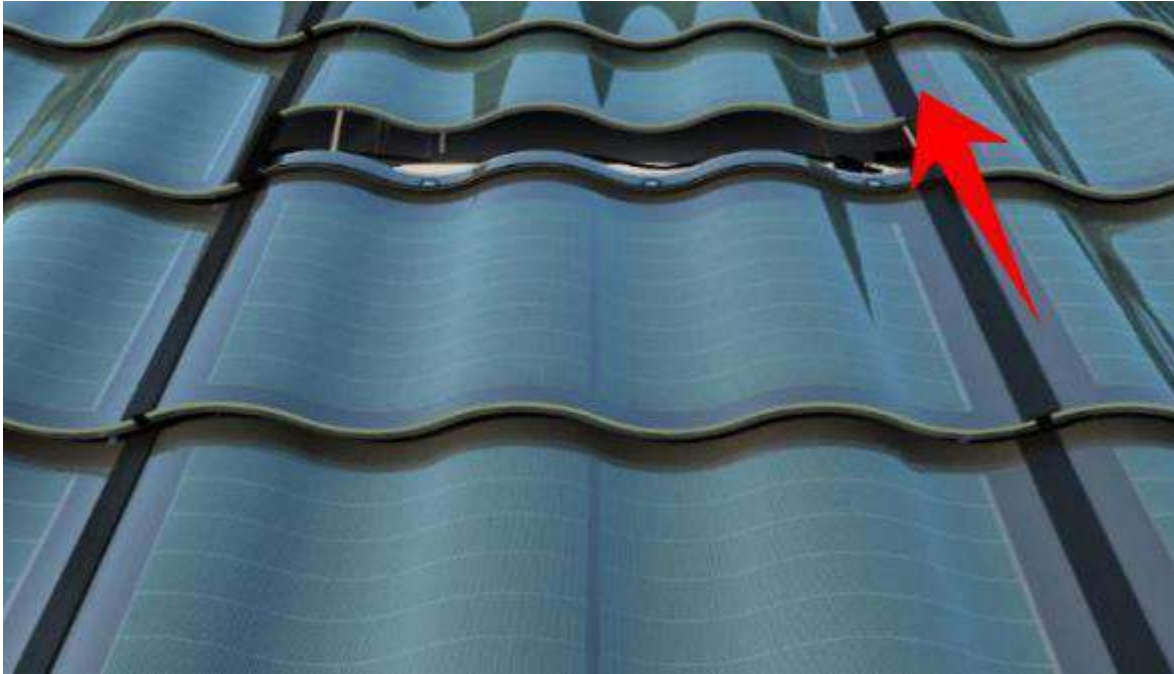
It has fine sealing performance as it is waterproof, fire -proof, and wind-proof. It has superior performance and long durability.

Installation sequence: From left to right, down to up



The upper and lower tiles are overlapped with 85mm, and 25, 34mm edge safety zones are kept to ensure no water leakage and pressure into batteries.


Easy replacement and installation



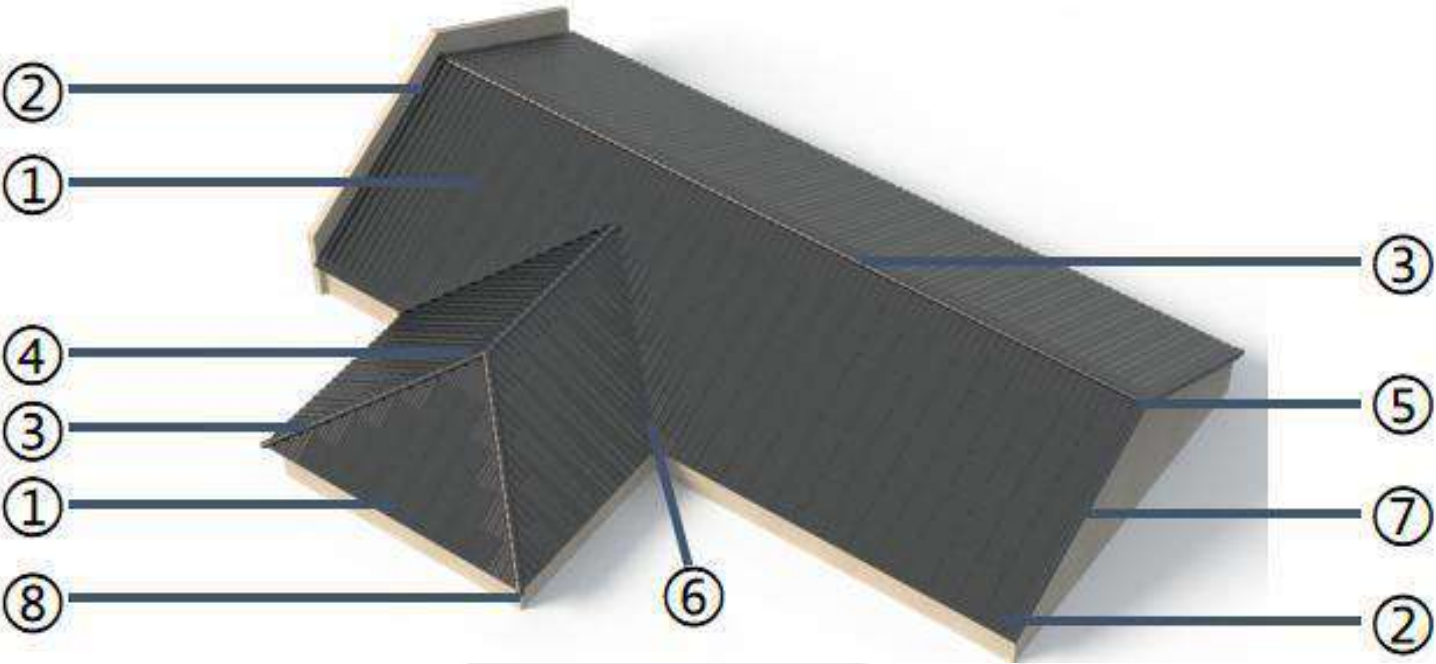
Push up the tile piece to be replaced



Take off the tile to be replaced

No.	Photo	Name	Reference Size
1		arch PV roof tile	721*500mm
2		edge tile	244*500mm
3		ridge tile	200*280mm
4		tee tile	150*150*150mm
5		Positive ridge head tile	180*250mm
6		ditch tiles	230*390mm
7		L-shaped cornice tile	140*300mm
8		Inclined ridge head tile	185*300mm

Technical data for mating tiles



Note: for item 2-8 are not included in the price

Our project case - Hong Kong



Our project case - Sweden



Our project case - Denmark & Czech Republic



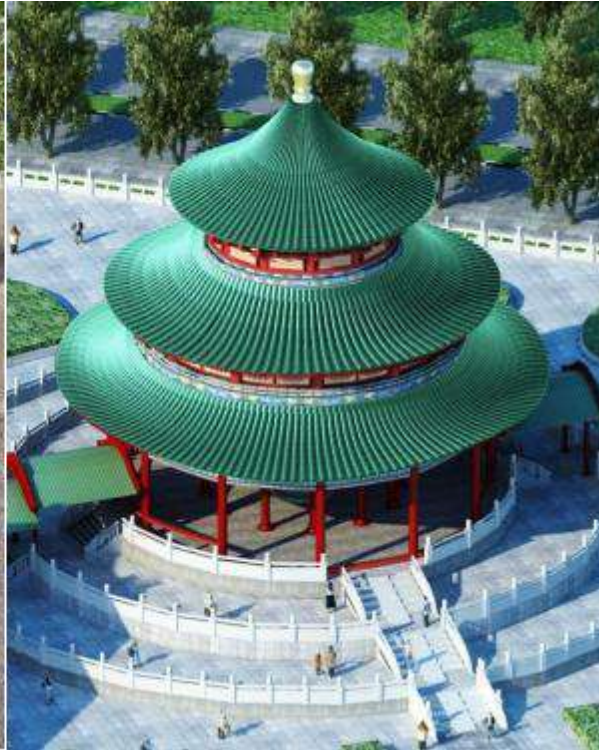
Our project case - Netherland & France



Our project case - Austria & Malaysia



Our project case - Thailand & Vietnam



Our project case - Korea & Japan



A large, stylized teal graphic on the right side of the page, composed of several overlapping geometric shapes, including triangles and polygons, creating a modern, abstract design.

HIITIO[®]

和诚电气

浙江和诚智能电气有限公司

ZHEJIANG HECHENG SMART ELECTRIC CO.,LTD.

浙江省杭州市萧山区经济技术开发区
桥南区知行路1125号

No.1125 Zhixing Road, Qiaonan District, Xiaoshan
Economic and Technological Development Zone,
Hangzhou, Zhejiang