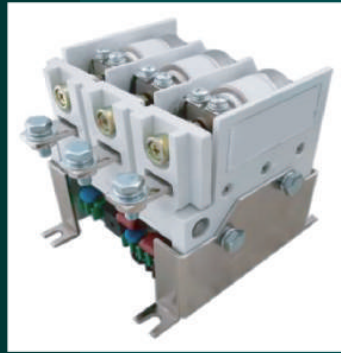


HITIO[®]



PRODUCT CATALOGUE

HCK6 Series Ac vacuum contactor

HCV Series Ac vacuum contactor

ZHEJIANG HECHENG SMART ELECTRIC CO., LTD.

Electrical suppliers used by the world's top 500



HIITIO

Zhejiang Hecheng Smart Electric Co, Ltd. (referred to as Hecheng Electric) was established in 2004 and is now headquartered at No.1125, Zhixing Road, Xiaoshan Economic and Technological Development Zone, Hangzhou City Zhejiang Province. Hecheng headquarters base 30000 square meters. Hecheng is a leading supplier of new energy industry and industrial control solutions in the world. At present, another large production base of Hecheng Electric is located in Mingguang, Anhui Province, with an area of 14 acres and a plant area of 20000 square meters. Hecheng Electric focuses on new energy vehicles, photovoltaic, energy storage, HVAC/R, industrial control, etc. Hecheng's main R&D production and operation products include: ceramic high-voltage DC relay/contactor, high-voltage DC fuse, airconditioning contactor, IEC contactor, UL 489 circuit breaker and disconnect box, etc. Hecheng's products all have passed UL, CSA, INTERTEK CE, CCC and other certifications.

Hecheng Electric aims at product research and development, 10% of the company's annual revenue is spent on R&D and 2% on IT penetration. Currently, the proportion of R&D personnel with more than 10 years of working experience in the industry is as high as 35%.

In addition, Hecheng Electric has introduced advanced automatic production lines and advanced laboratory testing equipment. We strictly implemented the IATF16949 system in the whole process. PLM + ERP + MES technology realizes the digitalization and intellectualization of the factory. The whole process of R&D, production and sales is able to be traced.

应用领域 Application Area



冶金 Metallurgists



电力系统 Power system



深井油田应用 Oil fields



煤矿 Mine



高铁 High-speed rail



起重设备 Erecting Equipment



HIITIO®

product feature

1. Ambient temperature: -25 °C ~40 °C .
2. Altitude: No more than 2000m.
3. Relative humidity: The relative humidity of the atmosphere does not exceed 50% when the ambient air temperature is 40 ° C, which is less than 50%
 Low temperatures allow for higher relative humidity, with the average temperature of the wettest month being 20 ° C when the moon is flat
 The maximum relative humidity is 90% and takes into account condensation on the surface of the product due to temperature changes.
4. Working environment: no rain and snow invasion, open fire, explosion danger and strong vibration.
5. Installation conditions: the Angle between the mounting surface and the vertical plane shall not exceed ±15°.
6. Pollution level: III .
7. Installation Category: Installation category 3.

Product Model:

HCK6 A - 500 / 1.5

Ac vacuum contactor: HCK6 Series、 HCV Series

Frame grade(HCK6): A、 B、 C、 D、 E

Rated current(A): 250、 315、 400、 500、 630 、 800

Rated voltage(kV): 1.5、 3.6

HCK6 Series Ac vacuum contactor (Closed Type)

Overview

HCK6 series AC vacuum contactor is suitable for AC 50Hz ~ 60Hz, the rated working voltage of the main loop is 1.5kV Or 3.6kV and below in the power system, used to make and break the circuit. Suitable for AC electric control The machine frequently starts and stops, can also be used to control other types of electrical appliances, widely used in power systems, stoneOil, chemical, coal, metallurgy and other industries.

product diagram



HCK6A-500(400)/1.5



HCK6A-630/1.5



HCK6A-630(500)/3.6



HCK6B-500(400/250)/1.5



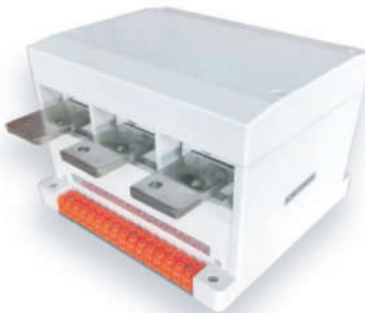
HCK6C-250/1.5



HCK6D-315/1.5



HCK6G-315/3.6



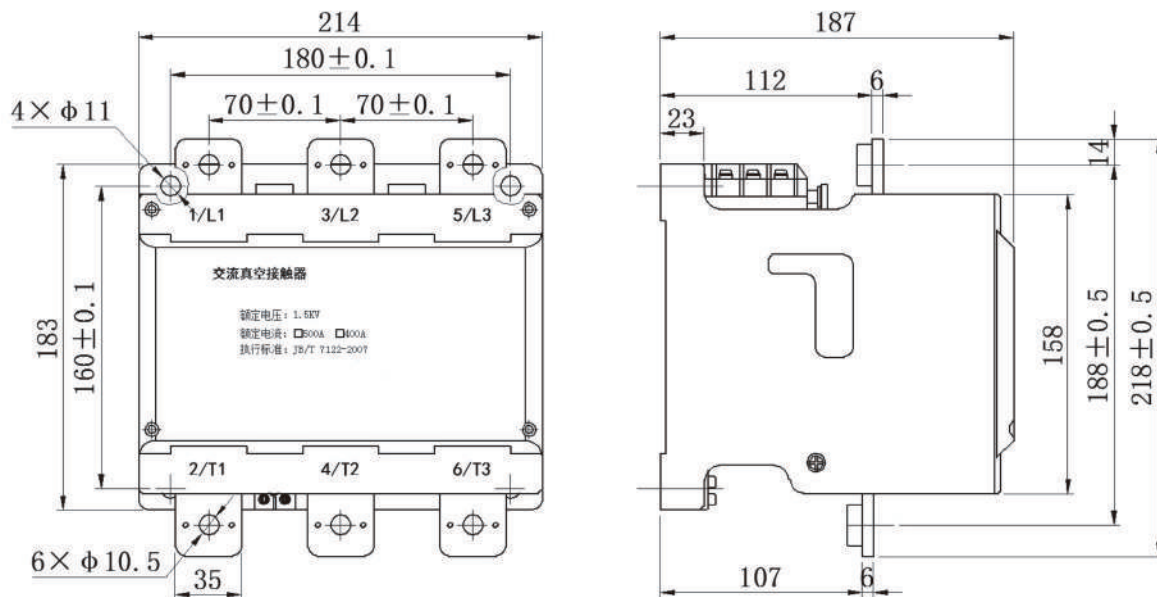
HCK6E-800/3.6(1.5)

HCK6A-500(400)/1.5

产品技术参数 technical specification

额定电流	Rated Current	A	500/400
额定电压	Rated Voltage	kV	1.5
额定接通能力		A/50 次 (A/50 times)	5000/4000
额定分断能力	Rated Breaking Capacity	A/50 次 (A/50 times)	4000/3200
吸合功率	Pick-up power	VA (瞬态, transient)	500
保持功率	Hold Power	W	15
机械寿命	Mechanical Life	次 times	1×10^6
电寿命	Electric Life	次 times	6×10^4
控制电源电压	Control Power Voltage	V (AC/DC)	36/110/127/220 /380, 可定制
辅助触点	Auxiliary switch	四对常开、三对常闭 4NO,3NC 可定制	
辅助触点容量	Auxiliary contact capacity	AC-15: Ue:AC380V Ie:1A DC-13: Ue:DC250V Ie:0.8A	
重量	Weight	Kg	11

产品外形尺寸 Outline and mounting dimension

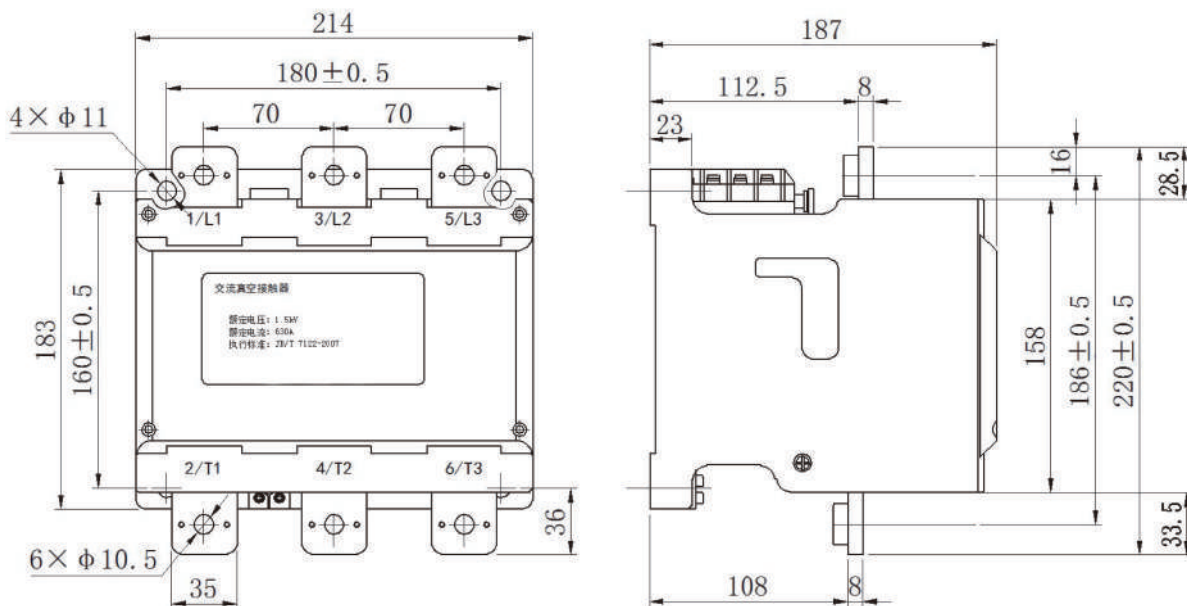


HCK6A-630/1.5

产品技术参数 technical specification

	Rated Current	A	630
额定电压	Rated Voltage	kV	1.5
额定接通能力	Rated Making Capacity	A/50 次 (A/50 times)	6300
额定分断能力	Rated Breaking Capacity	A/50 次 (A/50 times)	5000
吸合功率	Pick-up power	AV(瞬态,transient)	500
保持功率	Hold Power	W	15
机械寿命	Mechanical Life	次 times	1×10^6
电寿命	Electric Life	次 times	6×10^4
控制电源电压	Control Power Voltage	V(AV/DC)	36/110/127/220 /380, 可定制
辅助触点	Auxiliary switch	四对常开、三对常闭 4NO,3NC 可定制	
辅助触点容量	Auxiliary contact capacity	AC-15: Ue:AC380V Ie:1A DC-13: Ue:DC250V Ie:0.8A	
重量	Weight	Kg	11

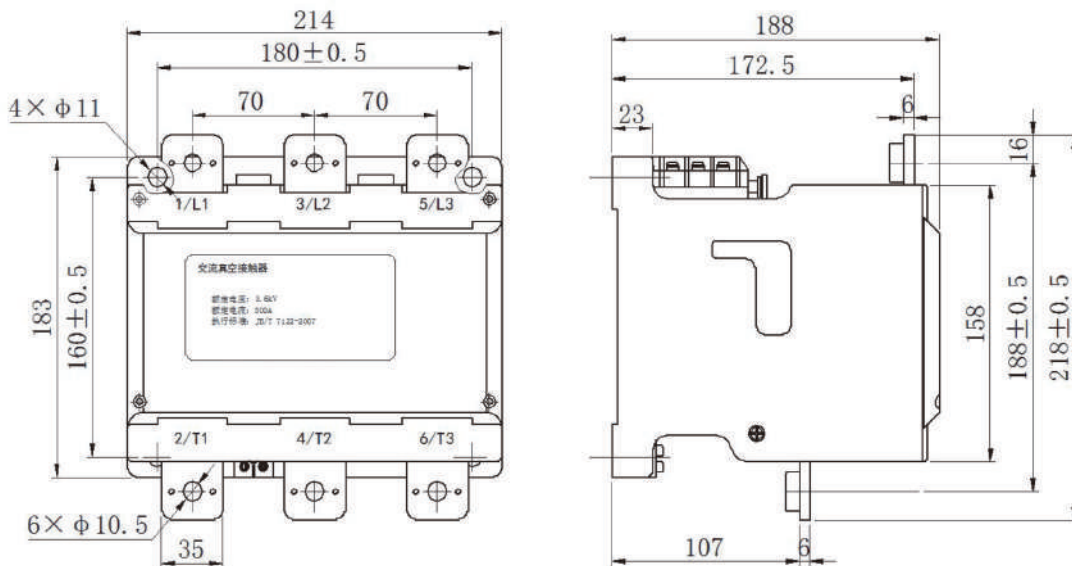
产品外形尺寸 Outline and mounting dimension



HCK6A-500/3.6

产品技术参数 technical specification			
额定电流	Rated Current	A	500
额定电压	Rated Voltage	kV	3.6
额定接通能力	Rated Making Capacity	A/50 次 (A/50 times)	5000
额定分断能力	Rated Breaking Capacity	A/50 次 (A/50 times)	4000
吸合功率	Pick-up power	VA (瞬态, transient)	500
保持功率	Hold Power	W	15
机械寿命	Mechanical Life	次 times	1×10^6
电寿命	Electric Life	次 times	6×10^4
控制电源电压	Control Power Voltage	V (AC/DC)	36/110/127/220/380, 可定制
辅助触点	Auxiliary switch	四对常开、三对常闭 4NO,3NC 可定制	
辅助触点容量	Auxiliary contact capacity	AC-15: Ue:AC380V Ie:1A DC-13: Ue:DC250V Ie:0.8A	
重量	Weight	Kg	11

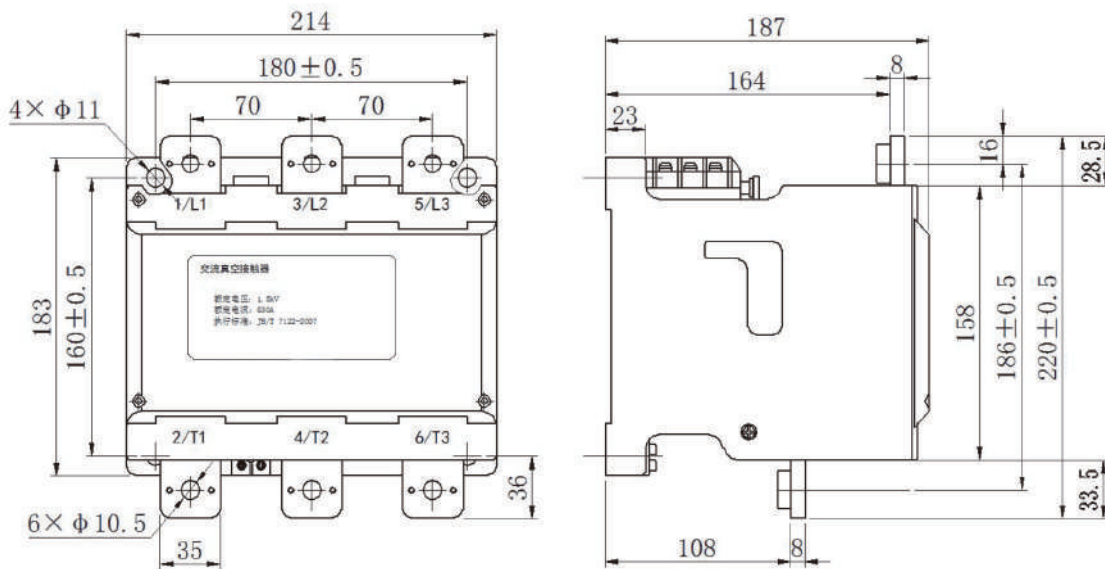
产品外形尺寸 Outline and mounting dimension



HCK6A-630/3.6

产品技术参数 technical specification			
额定电流	Rated Current	A	630
额定电压	Rated Voltage	kV	3.6
额定接通能力	Rated Making Capacity	A/50 次 (A/50 times)	6300
额定分断能力	Rated Breaking Capacity	A/50 次 (A/50 times)	5000
吸合功率	Pick-up power	VA (瞬态, transient)	500
保持功率	Hold Power	W	15
机械寿命	Mechanical Life	次 times	1×10^6
电寿命	Electric Life	次 times	6×10^4
控制电源电压	Control Power Voltage	V (AC/DC)	36/110/127/220 /380, 可定制
辅助触点	Auxiliary switch	四对常开、三对常闭 4NO,3NC 可定制	
辅助触点容量	Auxiliary contact capacity	AC-15: Ue:AC380V Ie:1A DC-13: Ue:DC250V Ie:0.8A	
重量	Weight	Kg	11

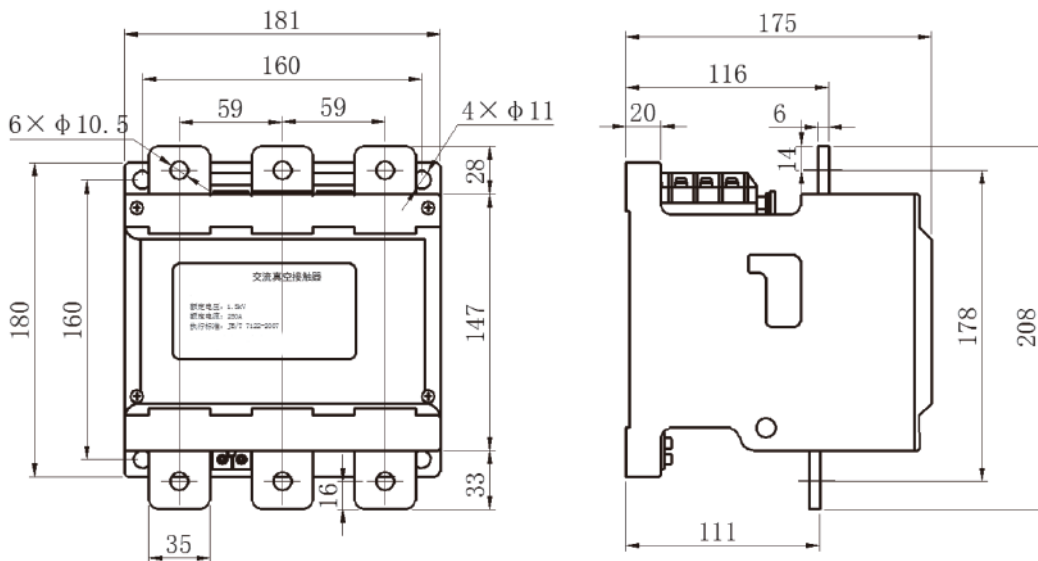
产品外形尺寸 Outline and mounting dimension



HCK6B-250/1.5

产品技术参数 technical specification			
额定电流	Rated Current	A	250
额定电压	Rated Voltage	kV	1.5
额定接通能力	Rated Making Capacity	A/50 次 (A/50 times)	3000
额定分断能力	Rated Breaking Capacity	A/50 次 (A/50 times)	2500
吸合功率	Pick-up power	W (瞬态, transient)	350
保持功率	Hold Power	W	15
机械寿命	Mechanical Life	次 times	1×10^6
电寿命	Electric Life	次 times	6×10^4
控制电源电压	Control Power Voltage	V (AC/DC)	36/110/127/220 /380, 可定制
辅助触点	Auxiliary switch	四对常开、三对常闭 4NO,3NC 可定制	
辅助触点容量	Auxiliary contact capacity	AC-15: Ue:AC380V Ie:1A DC-13: Ue:DC250V Ie:0.8A	
重量	Weight	Kg	7

产品外形尺寸 Outline and mounting dimension

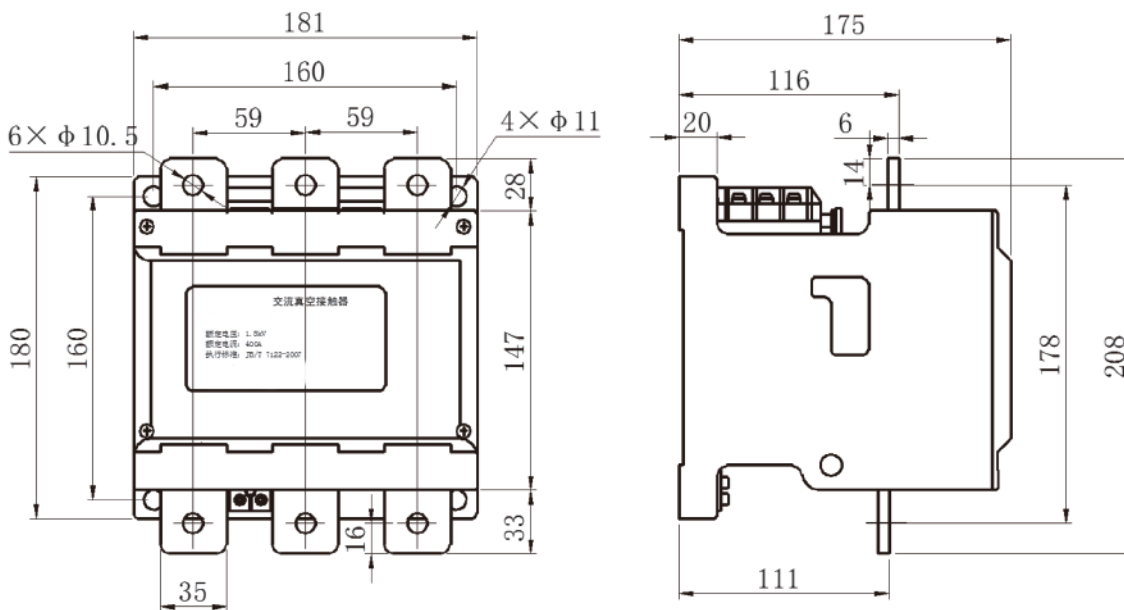


HCK6B-400/1.5

产品技术参数 technical specification

额定电流	Rated Current	A	400
额定电压	Rated Voltage	kV	1.5
额定接通能力	Rated Making Capacity	A/50 次 (A/50 times)	4000
额定分断能力	Rated Breaking Capacity	A/50 次 (A/50 times)	3200
吸合功率	Pick-up power	VA (瞬态, transient)	350
保持功率	Hold Power	W	15
机械寿命	Mechanical Life	次 times	1×10^6
电寿命	Electric Life	次 times	6×10^4
控制电源电压	Control Power Voltage	V (AC/DC)	36/110/127/220 /380, 可定制
辅助触点	Auxiliary switch	四对常开、三对常闭 4NO,3NC 可定制	
辅助触点容量	Auxiliary contact capacity	AC-15: Ue:AC380V Ie:1A DC-13: Ue:DC250V Ie:0.8A	
重量	Weight	Kg	8

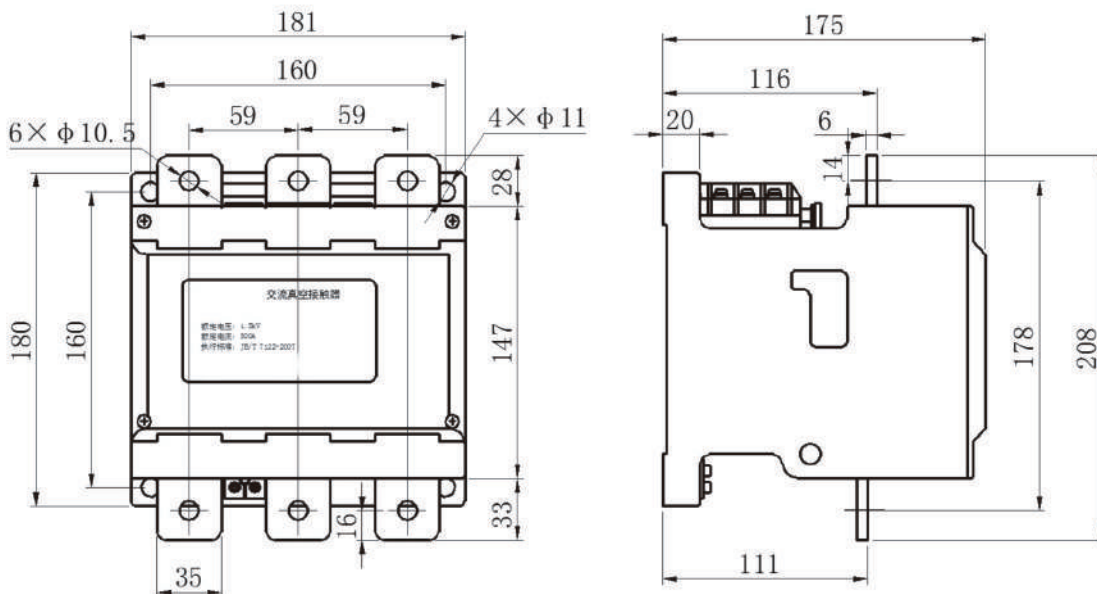
产品外形尺寸 Outline and mounting dimension



HCK6B-500/1.5

产品技术参数 technical specification			
额定电流	Rated Current	A	500
额定电压	Rated Voltage	kV	1.5
额定接通能力	Rated Making Capacity	A/50 次 (A/50 times)	5000
额定分断能力	Rated Breaking Capacity	A/50 次 (A/50 times)	4000
吸合功率	Pick-up power	VA (瞬态, transient)	350
保持功率	Hold Power	W	15
机械寿命	Mechanical Life	次 times	1×10^6
电寿命	Electric Life	次 times	6×10^4
控制电源电压	Control Power Voltage	V (AC/DC)	36/110/127/220 /380, 可定制
辅助触点	Auxiliary switch	四对常开、三对常闭 4NO,3NC 可定制	
辅助触点容量	Auxiliary contact capacity	AC-15: Ue:AC380V Ie:1A DC-13: Ue:DC250V Ie:0.8A	
重量	Weight	Kg	8

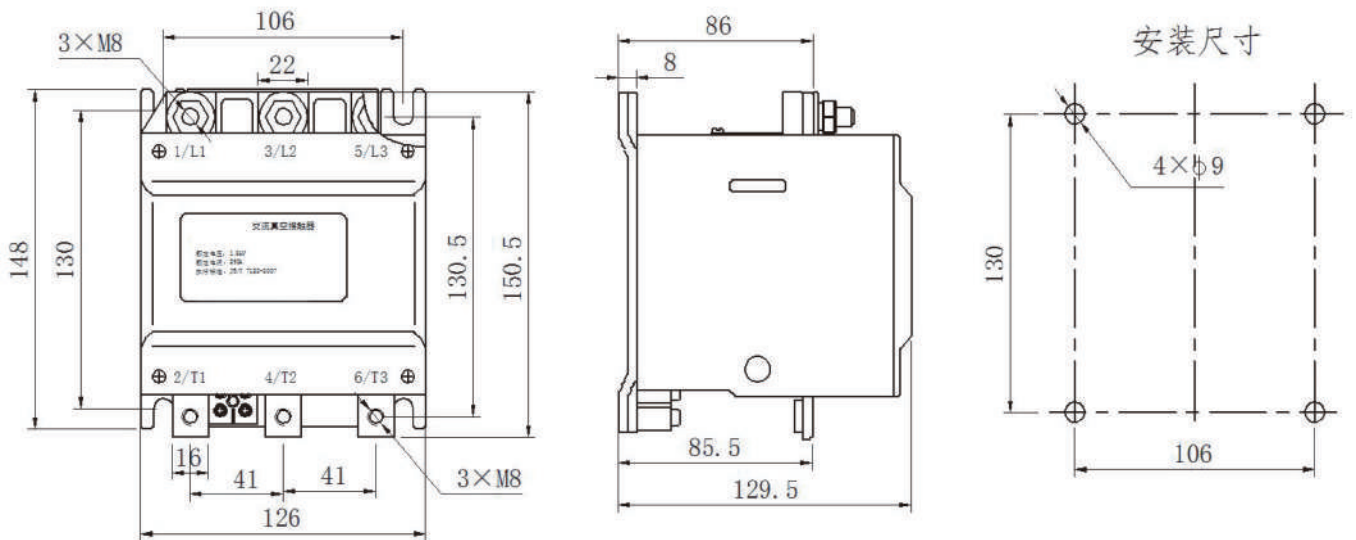
产品外形尺寸 Outline and mounting dimension



HCK6C-250/1.5

产品技术参数 technical specification			
额定电流	Rated Current	A	250
额定电压	Rated Voltage	kV	1.5
额定接通能力	Rated Making Capacity	A/50 次 (A/50 times)	12le
额定分断能力	Rated Breaking Capacity	A/50 次 (A/50 times)	10le
吸合功率	Pick-up power	VA (瞬态, transient)	250
保持功率	Hold Power	W	15
机械寿命	Mechanical Life	次 times	1×10 ⁶
电寿命	Electric Life	次 times	6×10 ⁴
控制电源电压	Control Power Voltage	V (AC/DC)	36/110/127/220 /380, 可定制
辅助触点	Auxiliary switch	三对常开、二对常闭 3NO,2NC 可定制	
辅助触点容量	Auxiliary contact capacity	AC-15: Ue:AC380V Ie:0.7A DC-13: Ue:DC220V Ie:0.1A	
重量	Weight	Kg	3.8

产品外形尺寸 Outline and mounting dimension

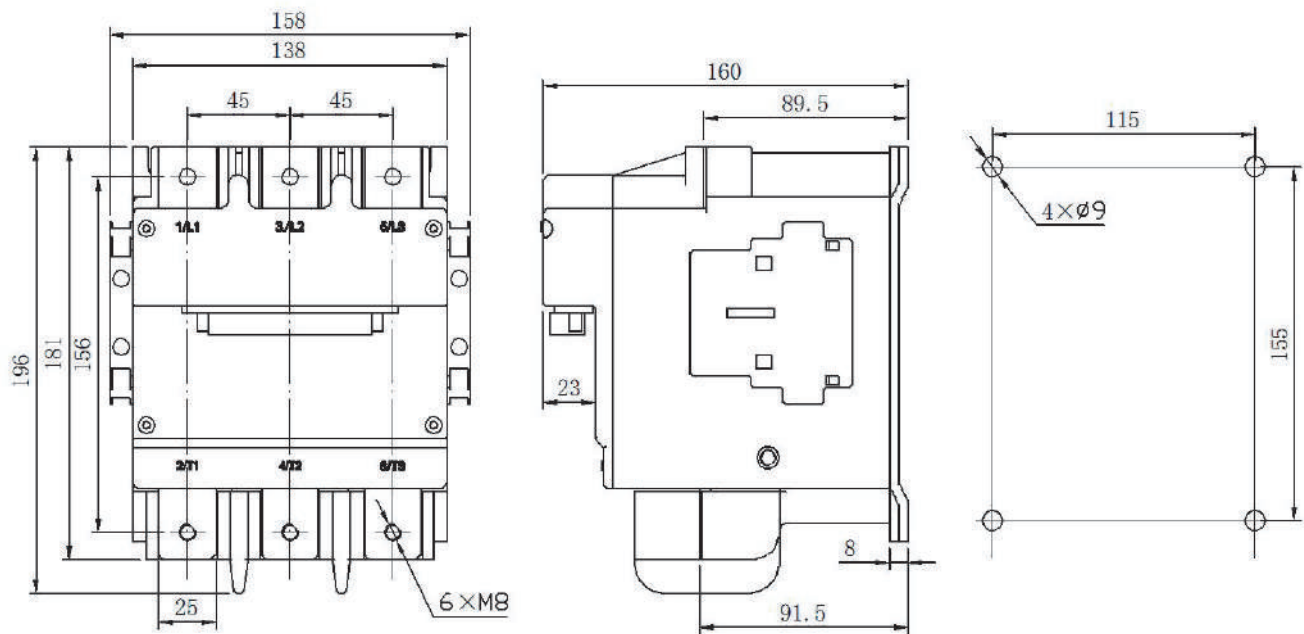


HCK6D-315/1.5

产品技术参数 technical specification

额定电流	Rated Current	A	250/160
额定电压	Rated Voltage	kV	1.5
额定接通能力	Rated Making Capacity	A/50 次 (A/50 times)	12Ie
额定分断能力	Rated Breaking Capacity	A/50 次 (A/50 times)	10Ie
吸合功率	Pick-up power	VA (瞬态, transient)	250
保持功率	Hold Power	W	15
机械寿命	Mechanical Life	次 times	1×10 ⁶
电寿命	Electric Life	次 times	6×10 ⁴
控制电源电压	Control Power Voltage	V (AC/DC)	36/110/127/220 /380, 可定制
辅助触点	Auxiliary switch	三对常开、二对常闭 3NO,2NC 可定制	
辅助触点容量	Auxiliary contact capacity	AC-15: Ue:AC380V Ie:0.7A DC-13: Ue:DC220V Ie:0.1A	
重量	Weight	Kg	3.8

产品外形尺寸 Outline and mounting dimension

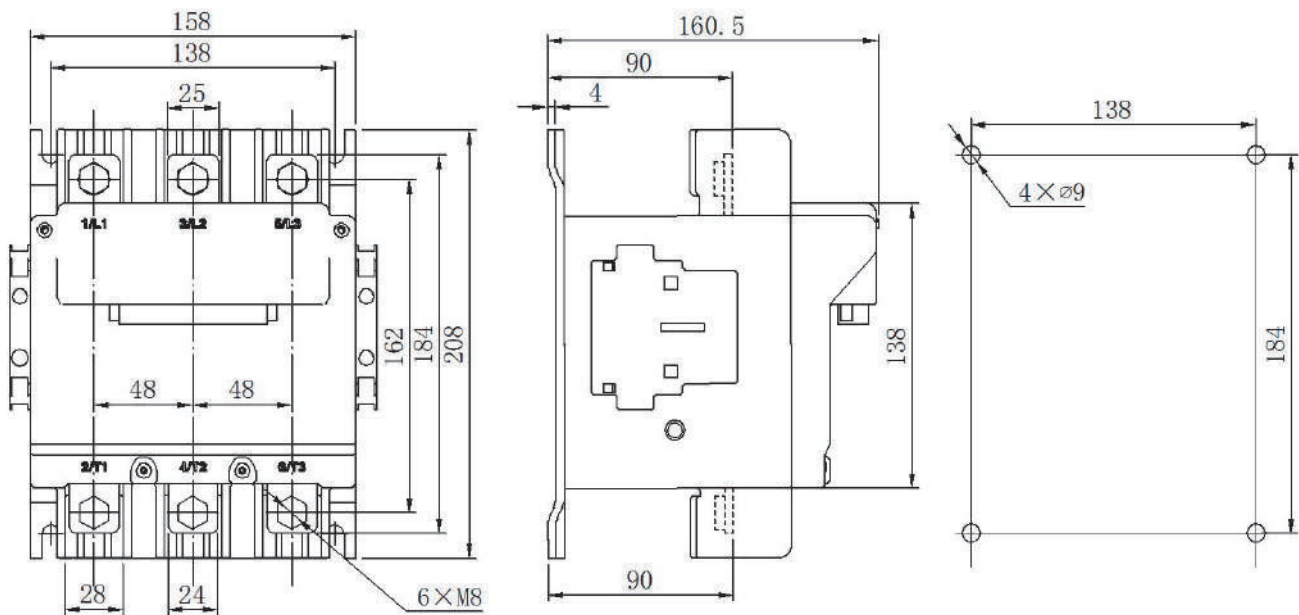


HCK6G-315/3.6

产品技术参数 technical specification

额定电流	Rated Current	A	315
额定电压	Rated Voltage	kV	3.6
额定接通能力	Rated Making Capacity	A/50 次 (A/50 times)	12Ie
额定分断能力	Rated Breaking Capacity	A/50 次 (A/50 times)	10Ie
吸合功率	Pick-up power	VA (瞬态, transient)	250
保持功率	Hold Power	W	15
机械寿命	Mechanical Life	次 times	1×10^6
电寿命	Electric Life	次 times	6×10^4
控制电源电压	Control Power Voltage	V (AC/DC)	36/110/127/220 /380, 可定制
辅助触点	Auxiliary switch	三对常开、二对常闭 3NO,2NC 可定制	
辅助触点容量	Auxiliary contact capacity	AC-15: Ue:AC380V Ie:0.7A DC-13: Ue:DC220V Ie:0.1A	
重量	Weight	Kg	3.8

产品外形尺寸 Outline and mounting dimension

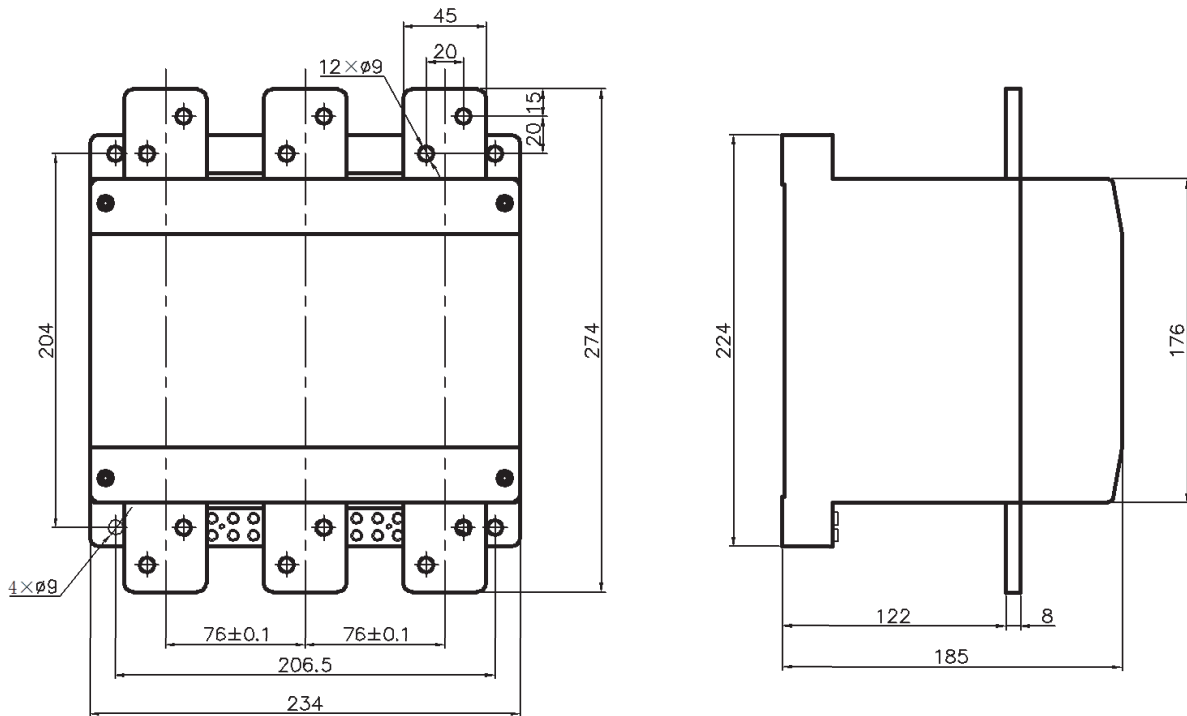


HCK6E-800/1.5

产品技术参数 technical specification

额定电流	Rated Current	A	800
额定电压	Rated Voltage	kV	1.5
额定接通能力	Rated Making Capacity	A/50 次 (A/50 times)	8000
额定分断能力	Rated Breaking Capacity	A/50 次 (A/50 times)	6400
极限分断能力	Limited Breaking Capacity	A/3 次 (A/3 times)	8000
吸合功率	Pick-up power	W (瞬态, transient)	1080
保持功率	Hold Power	W	55
机械寿命	Mechanical Life	次 times	1×10^6
电寿命	Electric Life	次 times	6×10^4
控制电源电压	Control Power Voltage	V (AC)	110、220 可定制
辅助触点	Auxiliary switch	四对常开、二对常闭 4NO,2NC	
辅助触点容量	Auxiliary contact capacity	AC-15: Ue:AC380V Ie:0.7A DC-13: Ue:DC220V Ie:0.1A	
重量	Weight	Kg	15.5

产品外形尺寸 Outline and mounting dimension

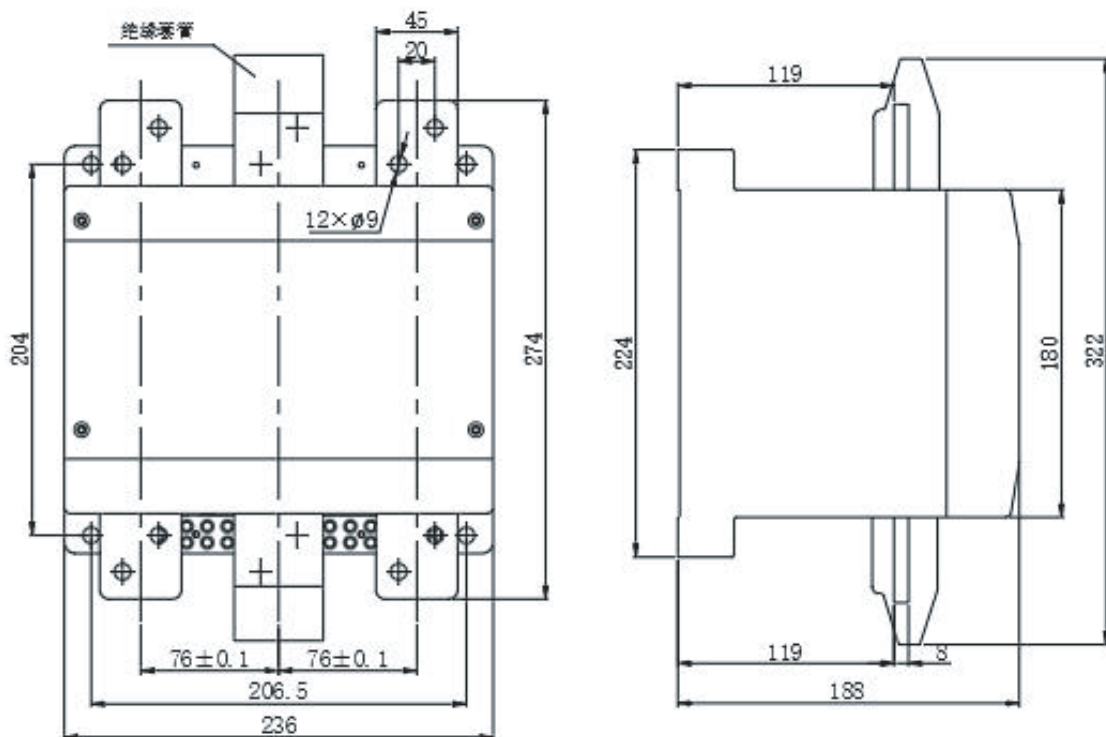


HCK6E-800/3.6

产品技术参数 technical specification

额定电流	Rated Current	A	800
额定电压	Rated Voltage	kV	3.6
额定接通能力	Rated Making Capacity	A/50 次 (A/50 times)	8000
额定分断能力	Rated Breaking Capacity	A/50 次 (A/50 times)	6400
极限分断能力	Limited Breaking Capacity	A/3 次 (A/3 times)	8000
吸合功率	Pick-up power	W (瞬态, transient)	1080
保持功率	Hold Power	W	55
机械寿命	Mechanical Life	次 times	1×10^6
电寿命	Electric Life	次 times	6×10^4
控制电源电压	Control Power Voltage	V (AC)	110、220 可定制
辅助触点	Auxiliary switch	四对常开、二对常闭 4NO,2NC	
辅助触点容量	Auxiliary contact capacity	AC-15: Ue:AC380V Ie:0.7A DC-13: Ue:DC220V Ie:0.1A	
重量	Weight	Kg	

产品外形尺寸 Outline and mounting dimension

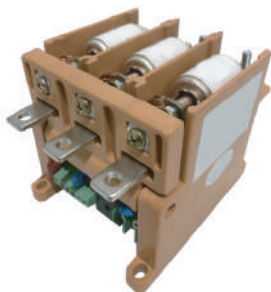


HCV Series Ac vacuum contactor (Open Type)

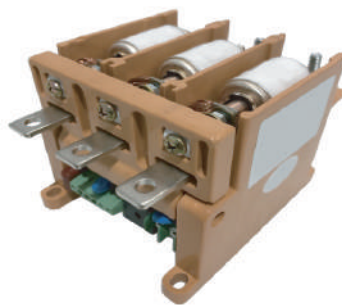
Overview

HCV series AC contactor is suitable for AC 50Hz, main circuit working voltage 1500V and below, In power systems with rated operating current 630A and below, make and break circuits (such as frequent starting and Control AC motor), suitable for a variety of protective devices to form a magnetic starter, widely used in power systems, Petroleum, chemical industry, coal mining, metallurgy and electrified railways.

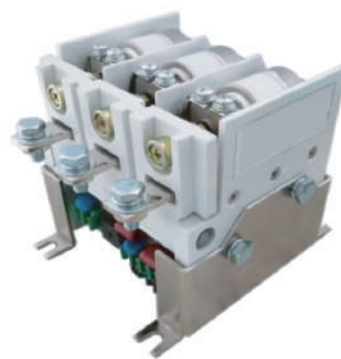
product diagram



HCV-80/1.5



HCV-125/1.5



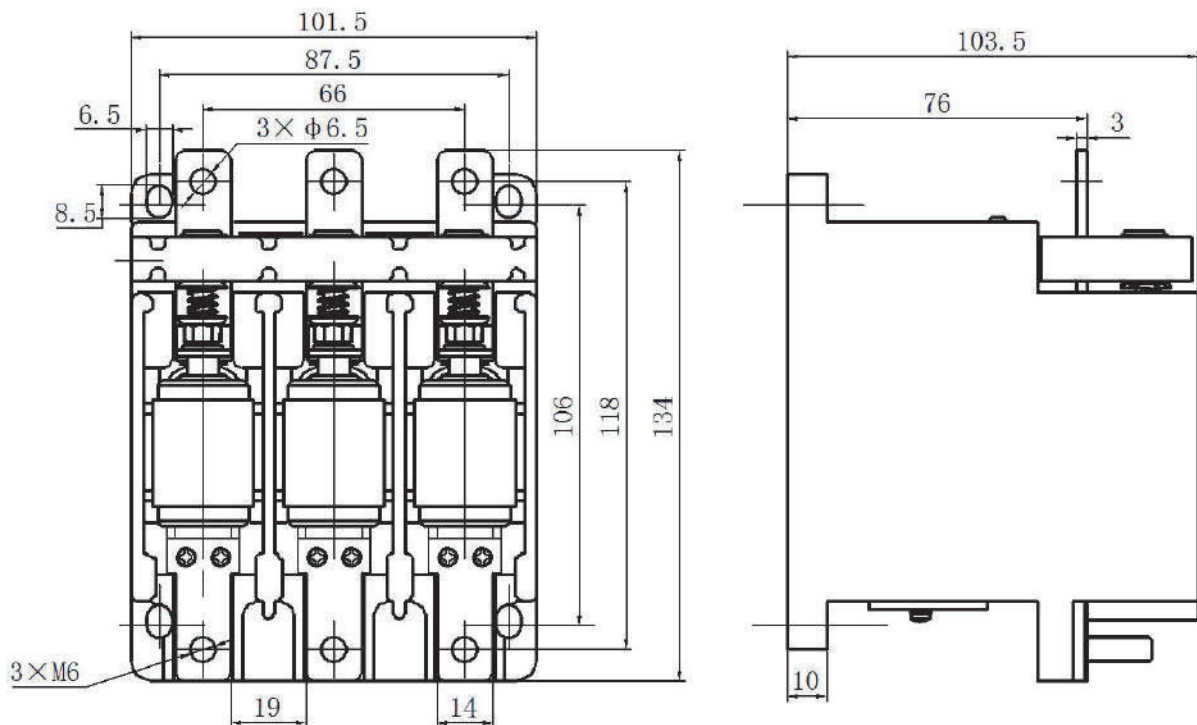
HCV-250(160)/1.5

HCV-80/1.5

产品技术参数 technical specification

额定电流	Rated Current	A	80
额定电压	Rated Voltage	kV	1.5
额定接通能力	Rated Making Capacity	A/50次 (A/50 times)	960
额定分断能力	Rated Breaking Capacity	A/50次 (A/50 times)	800
吸合功率	Pick-up power	VA (瞬态, transient)	240
保持功率	Hold Power	W	10
机械寿命	Mechanical Life	次 times	1×10^6
电寿命	Electric Life	次 times	6×10^4
控制电源电压	Control Power Voltage	V (AC/DC)	36、220 可定制
辅助触点	Auxiliary switch	两对常开、一对常闭 2NO,1NC	
辅助触点容量	Auxiliary contact capacity	AC-15: Ue:AC380V Ie:0.7A DC-13: Ue:DC220V Ie:0.1A	
重量	Weight	Kg	1.8

产品外形尺寸 Outline and mounting dimension

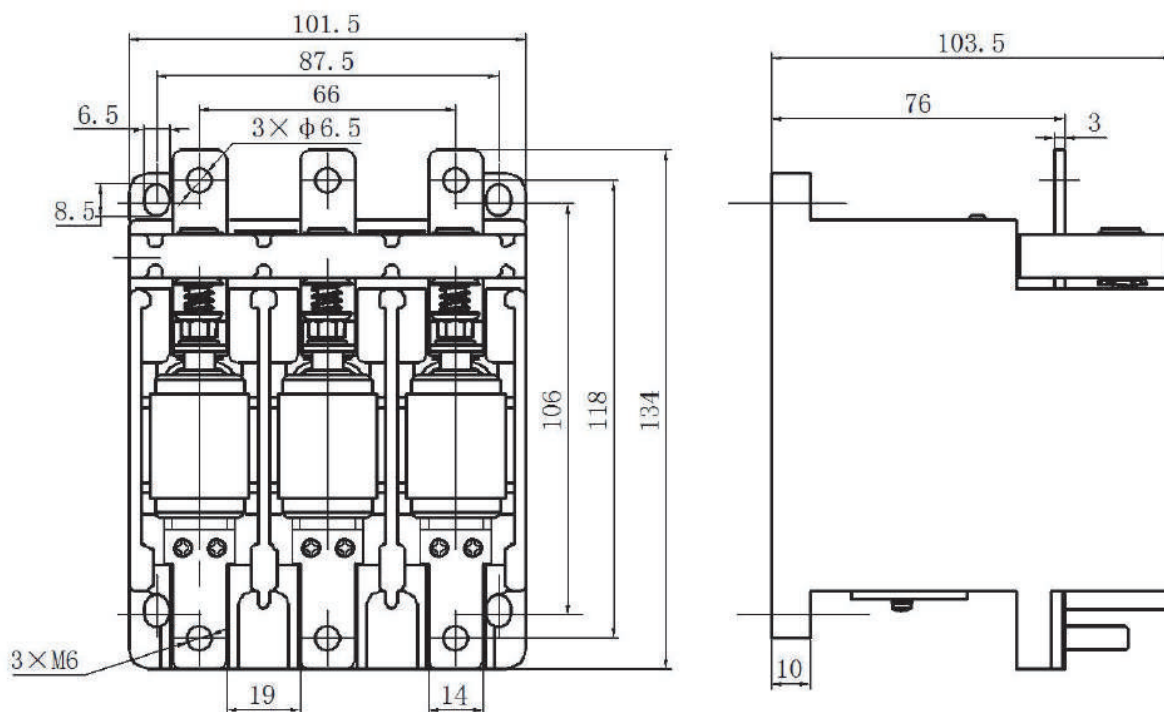


HCV-125/1.5

产品技术参数 technical specification

额定电流	Rated Current	A	125
额定电压	Rated Voltage	kV	1.5
额定接通能力	Rated Making Capacity	A/50 次 (A/50 times)	1500
额定分断能力	Rated Breaking Capacity	A/50 次 (A/50 times)	1250
吸合功率	Pick-up power	W (瞬态, transient)	240
保持功率	Hold Power	W	10
机械寿命	Mechanical Life	次 times	1×10^6
电寿命	Electric Life	次 times	6×10^4
控制电源电压	Control Power Voltage	V (AC/DC)	36、220 可定制
辅助触点	Auxiliary switch	两对常开、一对常闭 2NO,1NC	
辅助触点容量	Auxiliary contact capacity	AC-15: Ue:AC380V Ie:0.7A DC-13: Ue:DC220V Ie:0.1A	
重量	Weight	Kg	1.8

产品外形尺寸 Outline and mounting dimension

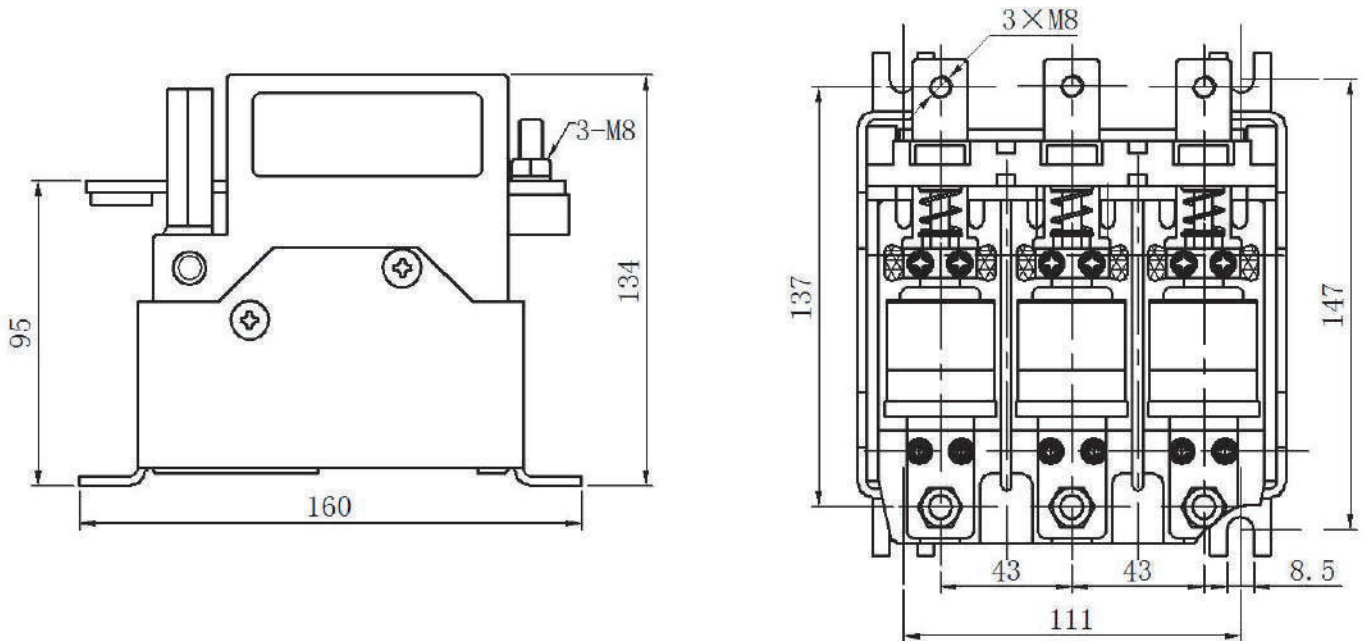


HCV-250(160)/1.5

产品技术参数 technical specification

额定电流	Rated Current	A	250(160)
额定电压	Rated Voltage	kV	1.5
额定接通能力	Rated Making Capacity	A/50 次 (A/50 times)	3000
额定分断能力	Rated Breaking Capacity	A/50 次 (A/50 times)	2500
吸合功率	Pick-up power	VA (瞬态, transient)	280
保持功率	Hold Power	W	18
机械寿命	Mechanical Life	次 times	1×10^6
电寿命	Electric Life	次 times	6×10^4
控制电源电压	Control Power Voltage	V (AC/DC)	36、220 可定制
辅助触点	Auxiliary switch	三对常开、两对常闭 2NO,1NC	
辅助触点容量	Auxiliary contact capacity	AC-15: Ue:AC380V Ie:0.7A DC-13: Ue:DC220V Ie:0.1A	
重量	Weight	Kg	4.1

产品外形尺寸 Outline and mounting dimension



HIITIO[®]



ZHEJIANG HECHENG SMART ELECTRIC CO.,LTD.

NO.1125 Zhixing Road, Qiaonan District,Xiaoshan
Economic and Technological Development Zone,
Hangzhou, Zhejiang

T +86-132-1617-9977

E sales@hiitio.com

w www.hiitio.com