

Specifications 技术参数

Ratings & Features Applications 电气参数/功能应用领域:

Catalog Sym: HCNR

◇ Voltage Rating 电压:

Ac: 250V

Dc: 150V

◇ Ampere Range 电流:

10 to 60A

◇ Interrupting Capacity 分断:

Ac: 200kA Rms Sym.

Dc: 50kA

◇ Applicable Standards 标准:

UL 248-12, Class RK5

◇ Service entrance switches 用户引路线开关;

◇ Helps protect motors against burnout from overloads 有助于保护电机免受过载;

◇ Provides motor overload, ground fault and short-circuit protection 提供电机过载、接地故障和短路保护;

◇ Switchboard mains and feeders 配电板主电源和馈线;

◇ Motor control central mains and motor branch circuits 电机控制中心电源和电机分支电路;

◇ All general purpose circuits 所有通用电路.

Standards / Approvals 认证/标准:

◇ Refer To UL 248.12

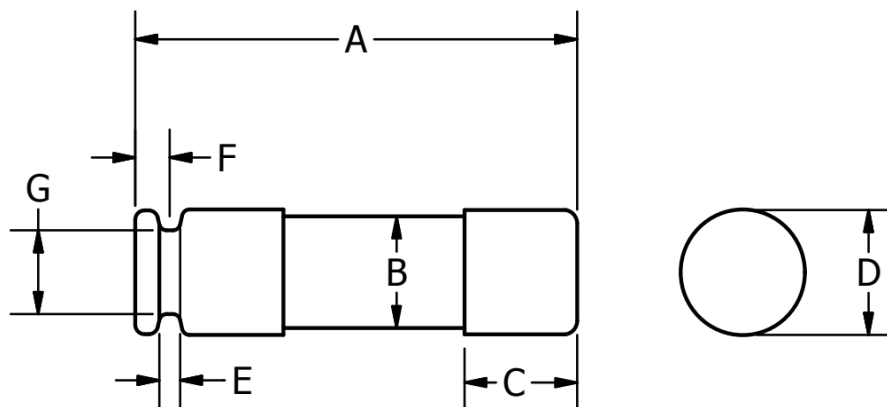
性能参考UL 248.12

◇ UL Listed, Std. 248-12, Class RK-5, Guide JDDZ, File E537893

Class RK5 Fuses



Dimensions (mm) 尺寸



Rated Current	A	B	C	D	E	F	G
	±1mm	±1mm	±0.5mm	±0.5mm	±0.5mm	±0.5mm	±0.5mm
10-30A	50.8	12.6	12.8	14.3	1.78	3.96	9.60
35-60A	76.2	18.6	16.0	20.6	2.18	4.78	16.2

Fuse Ratings 额定参数

HCNR (10-30A)

HCNR010 HCNR012 HCNR015

HCNR020 HCNR025 HCNR030

HCNR (35-60A)

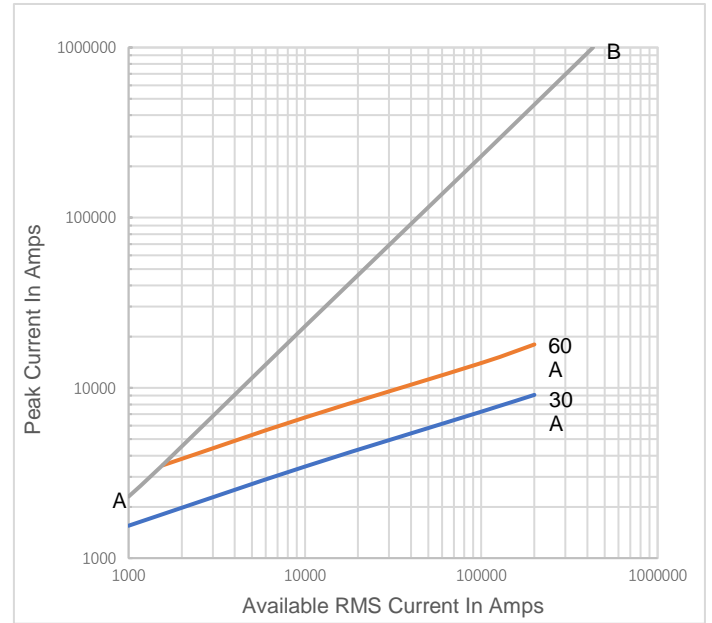
HCNR035 HCNR040 HCNR045

HCNR050 HCNR060

Quantity and Weight

Amps	Weight	Quantity Min	Carton
	pcs	box	Kg max
10-30A	20 g	10 pcs	0.22
35-60A	58 g	10 pcs	0.60

Current Limitation Curves



Time-Current Curve 时间电流曲线图

